

H.E.S.S. Communication: **Confluence Restructuring**

Heike Prokoph (DESY)



Current Confluence Setup (as of Oct 2019)

Main page is reflecting the general structure of H.E.S.S. management

- All major structures are directly linked directly from here
- Main entry point were the Working Groups
 - All task pages were linked from there

Further information linked from the main pages

- Organization Pages
 - Common Efforts (incl. Meetings, Internal Notes, Corporate Design, ...)
 - Services (incl Outreach, OC, Speaker's Bureau, MWL support, Publication Board)
- Envelop Groups (Transients Group & Moonlight Observations)
- Trash (for removing unwanted pages → will be done by admins)
- Fast links based on Common Confluence Templates

CHILD PAGES

Pages

Welcome to the H.E.S.S. Intern...

Confluence Board

Working groups

Common efforts

Organization

Services

Trash

Product Requirements

Meeting Notes

Decision register

Local Information

File Lists

How-To Articles

Shared links

Hadronic Interaction Models

Interdisciplinary Transients Gr...

Moonlight Observations Group

Postdoc - PhD initiative

Current Confluence Setup (as of Nov 2019)

Main page is reflecting the general structure of H.E.S.S. management

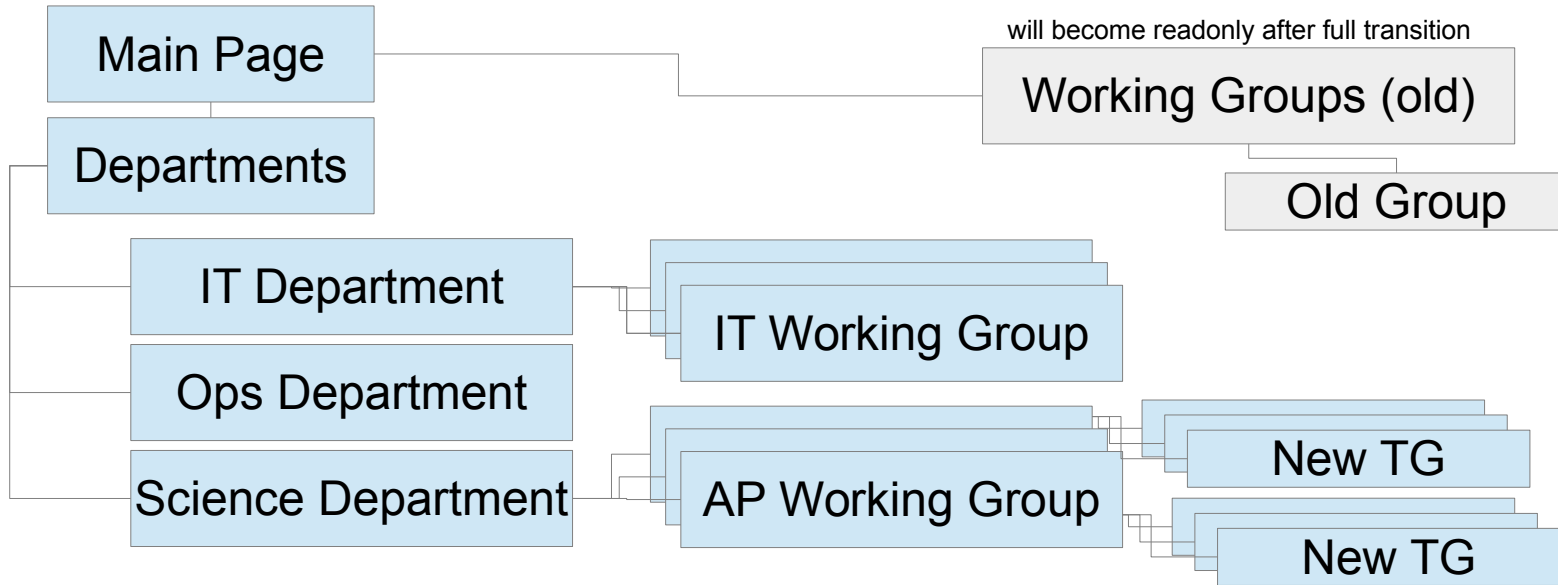
- All major structures are directly linked directly from here
- Main entry point were the Working Groups → will be kept as read-only after restructuring finished
 - All task pages were linked from there → (future) active tasks will be reflected in the new structure

New structure of the management since Oct 2019

- Need to be applied to the confluence setup (restructuring page tree)
- Main page modifications took place
 - Added Department pages as entrance point for future Working Groups
 - Added Working Group pages as entrance point for future Task Groups
- Added confluence calander for overview of meetings and on-site work to main page
 - Please encourage all working/task groups to add their meetings to the meeting calendar!

Future Confluence Setup

Confluence will be (slowly) adopted to the new management structure



Towards the Future Confluence Setup

Active Task Forces should be moved (copied) to the new structure

- Active task forces are identified by corresponding working group convenor (and if in doubt the corresponding department lead)
- The decision if a task force page (and its corresponding sub-pages) should be moved (or partly copied) has to be decided on a case by case basis

Moving pages

In general, moving task force pages is recommended given that all sub-pages will be moved to the new location as well. Incoming and outgoing links will automatically be adjusted by the system. Bookmarked links (e.g., in your browser history) will be providing you with a link to the new location.

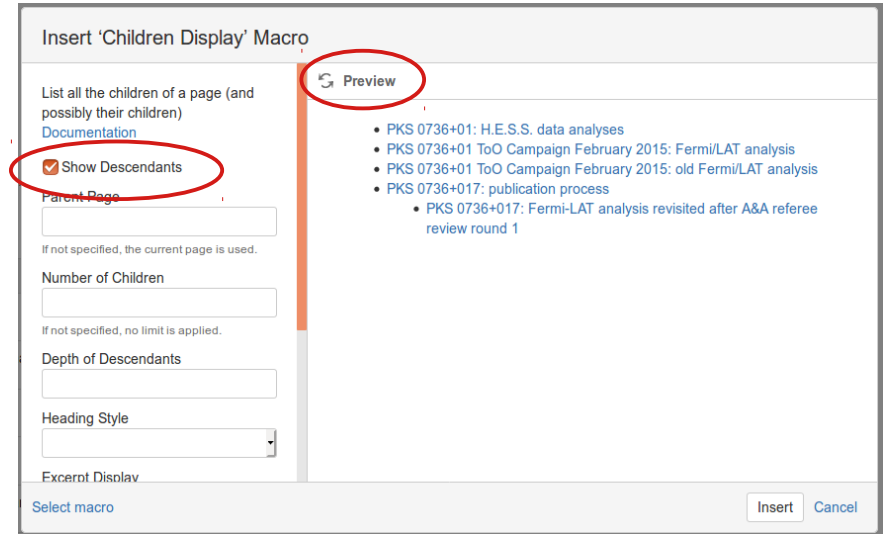
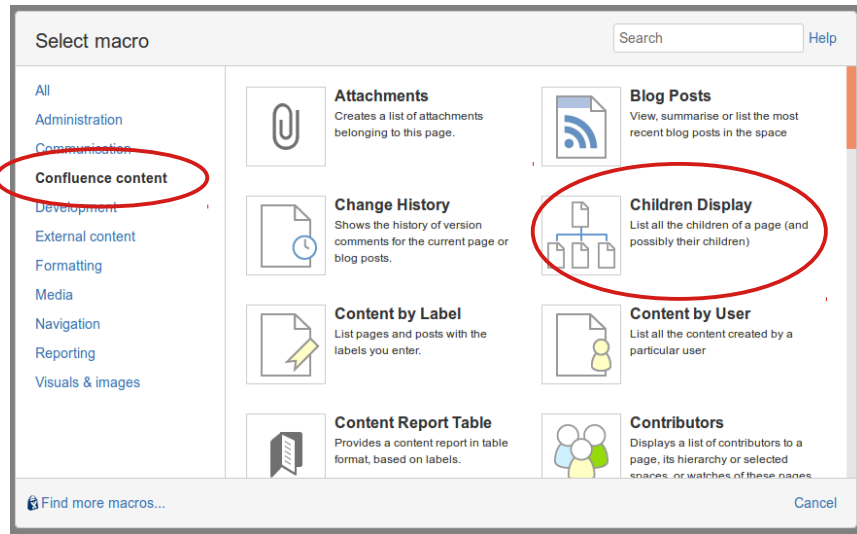
CONs:

- Several sub-pages are just used as a local disk dump and are thus hard to understand
- Several sub-pages are heavily outdated and not needed anymore
- Several sub-pages are not following the Confluence naming scheme conventions

HOW-TO: Moving Pages within Confluence

Recommendations **before** moving pages

- Check if the names of the child pages are descriptive enough (or change them accordingly)
 - Go to the main page and add the 'Children Display' macro to see which pages are linked directly to the task force and would be moved to the new place



HOW-TO: Moving Pages within Confluence

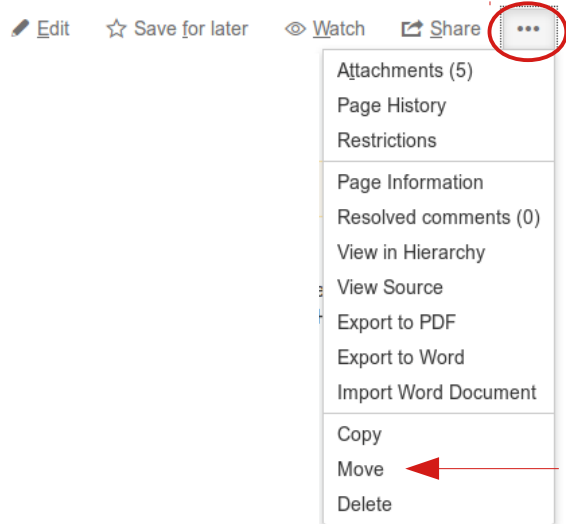
Recommendations **before** moving pages

- Check if the names of the child pages are descriptive enough (or change them accordingly)
 - Go to the main page and add the ‚Children Display‘ macro to see which pages are linked directly to the task force and would be moved to the new place
- If names of sub-pages are „HAP analysis“ or „Editorial Board“ or similar please rename them, e.g., „HAP analysis of 3C279 in 2019“ or „PKS 0736: Editorial Board“
 - It is highly recommended for scientific task pages to at least include the source name in the title
- If several/many pages are considered outdated as they are documenting analyses which have been redone several times, it is recommended to copy (rather than moving) the main task force page and only move the important sub-pages to the new structure
 - Consider moving heavily outdated pages to trash (to allow easier search in the future)
 - In case of question, consult with your WG convenor
- See ‚common pitfalls‘ for naming schemes

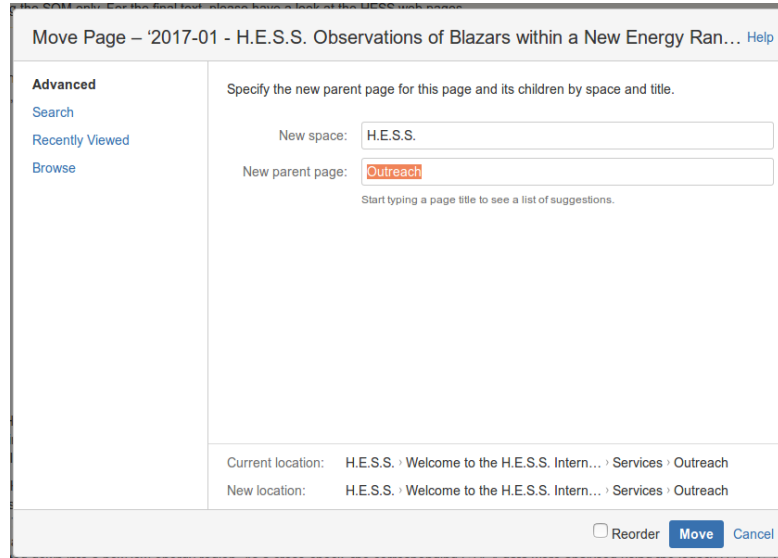
HOW-TO: Moving Pages within Confluence

Once you have identified the main page (and its children) which you wanna move, you can move it to its new location using the ‚Move‘ command hidden in the right corner behind the three dots.

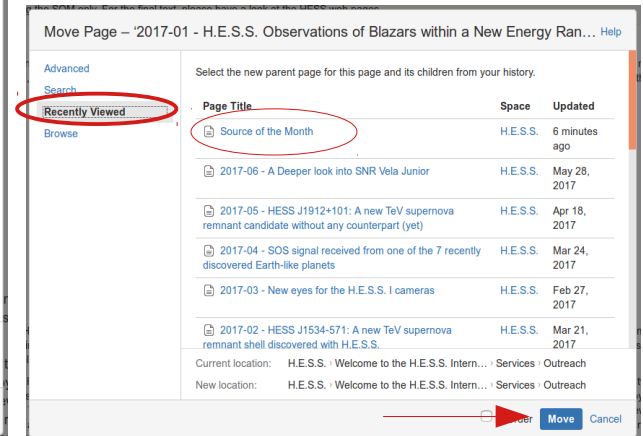
Top right corner of your confluence page



Move popup window will by default suggest the current page



Recommendation: Click on the page where you want to move your task group page beforehand, it will be among the top of ‚recently viewed‘
→ select the new mother page
→ and finish the move by clicking ‚move‘



H.E.S.S. Communication: **Confluence – Common** **pitfalls**

Heike Prokoph (DESY)



Naming Conventions in H.E.S.S. Confluence

Read the **Documentation for Stressed out Physicists**

- Bad examples for titles of confluence pages:
 - Meeting Minutes [which meeting?]
 - Crab [...what? Analysis? Proposal? Salad?]
 - Crb Nebula Mono-Analysis 2013 [typo = unsearchable!]
 - Pete's analyses [no-one can guess what is on it]
- Good examples
 - Galactic WG Meeting 21.05.2013
 - Crab Nebula Mono-Analysis 2013
- Try to use capitalization in titles
 - Conjunctions, articles, and short prepositions are not considered major words; however, capitalize all words of four letters or more.

Searching in Confluence

„I cannot find information about XYZ using search“

- Internal confluence search is not a google-like engine
 - No correcting/ignorance of spelling mistakes nor BE/AE
 - Whitespaces (e.g., in source names) make a difference
- Task pages and sub-pages are named badly
 - „HAP Analysis“ is a bad name for within a task group, but about 10% of the pages with this in the title, there is no additional information given in the title...
 - This needs to be improved by all users!
- Users dont use search restrictions, e.g., to search for PKS 2155 in the page title only



The image displays three screenshots of a Confluence search interface. The top screenshot shows a search for 'PKS 2155' resulting in 3803 results. The middle screenshot shows a search for 'PKS2155.xml' resulting in 923 results, with a snippet of XML code visible. The bottom screenshot shows a search for 'PKS 2155' resulting in 85 results, with a dropdown menu open showing search filters like 'With ancestor', 'Created', 'Creator', 'Label', 'Mentioning user', 'With parent', and 'With title'. Red circles highlight the result counts in each screenshot, and an arrow points to the 'With title' filter in the bottom screenshot.

PKS 2155

Page 1 of 381. Showing 3803 results (0.061 seconds)

[PKS 2155-304 analysis of the 2015 - 2019 monitoring](#)
SED modelling jyf ATOM observations Overview H.E.S.S. papers on **PKS 2155304**: Gammaray blazar spectra with H.E.S.S. II mono analysis: The case of **PKS 2155304** and PG 1553113 arXiv <https://arxiv.org/abs/1612.01843> Characterizing the yray longterm variability of **PKS 2155304** with H.E.S.S. and FermiLAT arXiv
H.E.S.S. • yesterday at 1:42 PM

PKS2155

Page 1 of 93. Showing 923 results (0.037 seconds)

[PKS2155.xml](#)
<?xml version="1.0" encoding="UTF8" standalone="no"?> <sourcecellibrar <source name="PKS2155" type="PointSource" instruments="HESS" tsc: type="PowerLaw"> <parameter name="Prefactor" scale="1.0e17" value: max="1e6" free="1"/> <parameter name="Index" scale="1" value
H.E.S.S. / ... / X-check analyses with tools and M++ • Apr 12, 2015

PKS 2155

Page 1 of 9. Showing 85 results (0.044 seconds)

OF TYPE
All content
Pages
Blog Posts
Attachments
Spaces
Custom

Add a filter
With ancestor
Created
Creator
Label
Mentioning user
With parent
With title